

Keeping You
CONNECTED

March/April 2017



Go the Montana Way, pg. 5

- Backup Power Customer Notice, pg. 4
- Rural Library Showcase, pg. 8

Published for subscribers of



CONTENTS



OUR COVER

Thank you to Christine Bakke of Reed Point for her photo "Branding". Christine was the Second Place Winner in the 2016 Photo Contest.



FEATURES

- 2 Community Crossword
- 3 Cooks Connection
- 4 Backup Power Customer Notice
- 5 Go the Montana Way
- 6 Internet Speed You Need
- 7 Swap & Shop
- 8 Rural Library Showcase
- 9 Directory Changes
- 10 Statement of Non-Discrimination

BILL DUE DATE CHANGE

For customer convenience, Triangle's "Bill Due Date" has been changed from a variable date each month to the 20th of each month. If you are struggling to meet this due date, please contact the Credit Department to set up a payment arrangement on your account.

CONTACT US

Call 406.394.7807 or 611 or 1.800.332.1201

Pay by Phone 1.888.815.1040

Website www.itstriangle.com

E-mail www.itstriangle.com/contact-us

Visit Mon - Fri 8am - 5pm, 2121 Hwy 2 NW

Write PO Box 1140, Havre MT 59501

24/7 Internet Tech Support 1.877.730.8215

Call Before You Dig 811 or CallBeforeYouDig.com

Triangle Mobile 117 1st St, Havre MT 59501

Website www.itstrianglemobile.com

f facebook.com/trianglecommunications

t twitter.com/@itsTriangle

YouTube youtube.com/itsTriangle

in linkedin.com/company/triangle-communications

COMMUNITY CROSSWORD

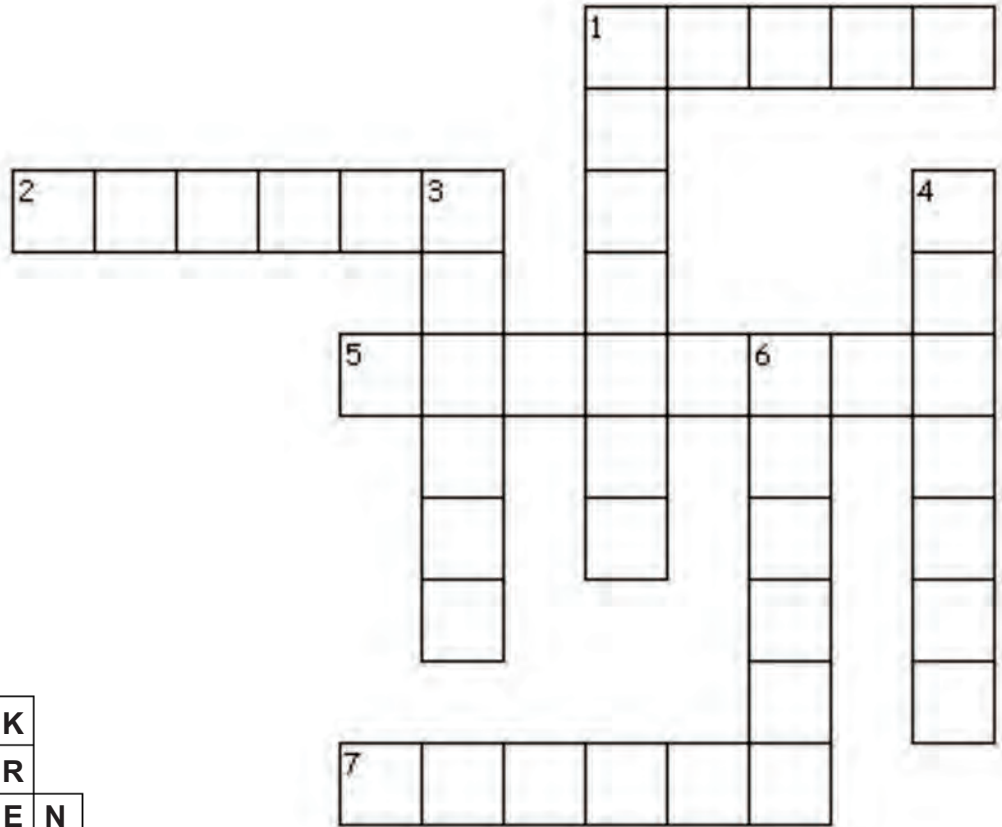
Featuring Moore, MT.

Across

- The community of ___ was named after Henry D. Moore who helped finance the Jawbone Railroad line west of Lewistown.
- At one time, Moore produced more wheat than any other community in the ___ Basin.
- In 1908, Moore was home to a modern ___ and ice cream plant.
- Moore and Eddies Corner are located in ___ County.

Down

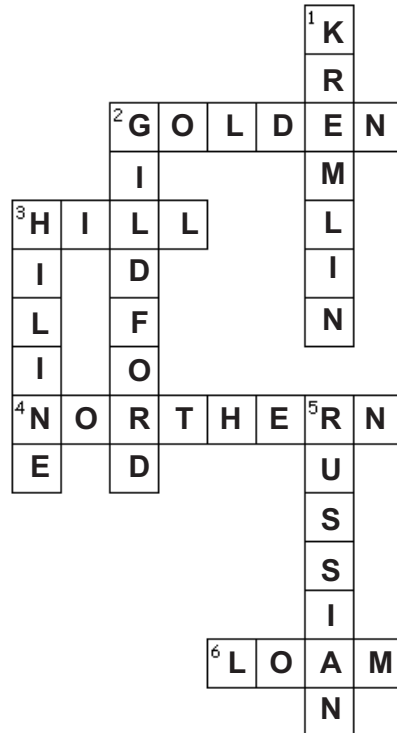
- The Jawbone Railroad line was part of the ___ Railway Company.
- Richard A. ___ was the president of the Montana Railway Company.
- ___ Lake is located about 20 miles south of Moore.
- ___ Corner is named after Ed McConnell who built the café, bar and gas station and the Edwards family who supplied the lumber.



ANSWERS

For the November/December
Community Crossword,
Kremlin/Gildford, MT.

Answers are also available at
www.itsTriangle.com under the
E-Newsletter & Magazine tab.



COOKS CONNECTION

Dishing Up Montana's Best Recipes

Thank you to everyone that has shared their recipes, keep them coming! If you have a favorite recipe of any kind that you would like to share, we would love to have it.



Your recipe could appear here and earn a FREE GIFT!

Photocopy, print or type your favorite recipe and send it in one of the following ways:

1. Mail to Newsletter, PO Box 1140, Havre MT 59501
2. E-mail newsletter@itsTriangle.net

RECIPE

Cheesecake

Submitted by Earlene Ward of Chester

INGREDIENTS

1 small box lemon Jello
1 cup boiling water
1-8 oz. pkg. of cream cheese
1 cup sugar
1 tsp. vanilla
1-13 oz. can evaporated milk
1 graham cracker crumb pie crust
2 Tbsp. lemon juice

DIRECTIONS

Make graham cracker crust, reserve some for top dressing. Dissolve lemon Jello and boiling water; put into refrigerator to cool. Mix cream cheese, sugar and vanilla until creamy. Add Jello to cream cheese mixture and beat well. Beat evaporated milk until foamy and add lemon juice. Beat stiff and add creamy mixture. Pour into crust and sprinkle with remaining graham cracker crumbs. Refrigerate.

RECIPE

Apple Pie

Submitted by Rhoda Miller of Moore

INGREDIENTS

3 cups sliced apples
1 cup sugar
3 Tbsp flour
½ tsp. cinnamon
2 Tbsp butter
3 Tbsp rich milk

DIRECTIONS

Mix apples, sugar, flour, milk and cinnamon together. Blend well. Place in a 9 inch unbaked pie shell. Add dots of butter on top. Put crust on top. Bake at 375° for 45 minutes. Also very good with crumb topping.

For crumb topping mix together:

½ cup sugar
⅓ cup butter
1 cup flour

RECIPE

Six Course Dinner

Submitted by Katherine Simonson of Saco

INGREDIENTS

2 ½ cups diced potatoes
1 cup green pepper, sliced
2 cups sliced celery
2 cups raw hamburger
1 cup sliced onion
2 tsp. salt
¼ tsp. pepper
2 cups tomatoes

DIRECTIONS

Put ingredients in a baking dish in order given. Sprinkle salt and pepper over top. Bake for one hour in 350° oven.

BACKUP POWER CUSTOMER NOTICE

Backup Power for Residential Voice Telephone Services During Power Outages

For many years, your home telephone would allow you to stay connected to emergency voice services during a power outage. However, if your residential voice telephone service is provided using fiber optics or fixed wireless rather than the traditional copper based line, then it requires backup battery power to continue functioning during an outage. To avoid a disruption of home voice service during an outage - and to maintain the ability to connect to 911 emergency services - Triangle Communications provides you with a battery for the backup power for your residential voice telephone service at the time of the initial installation at no additional cost.

What Your Battery Can - and Can't - Do for You

The backup battery provided by Triangle Communications for powering the fiber optic or fixed wireless network terminal allows you to continue to use your home voice services during a power outage. Without a backup battery or alternate backup source such as a generator, customers with fiber or fixed wireless based residential telephone service will not be able to make any calls, including emergency calls to 911. The only way to maintain the ability to use your telephone is by using some form of backup power. Our backup battery does not provide power to any services other than voice. All Internet services are turned off in the network terminal after five minutes of power outage to better conserve battery power for voice service. Home security systems, cordless phones, medical monitoring devices and other equipment will not run on a residential voice telephone backup battery.

Replacement Options

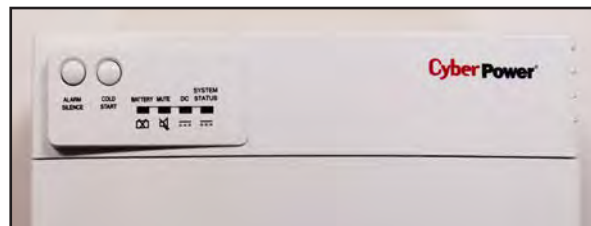
As previously noted, a backup battery has been provided by Triangle Communications during the initial installation. However, the battery provided by our company may need to be replaced every two or three years or when the battery is no longer functioning.

Triangle Communications provided replacement backup batteries.

Triangle Communications will provide and install at no cost to you, a replacement backup battery, upon appointment, when it becomes known that the battery needs to be replaced. If you have any questions, please call 1-800-332-1201, or email techsupport@itstriangle.net. Additional spare backup batteries to be stored in your home may be purchased from our company. Our 8 hour backup batteries cost approximately \$30 each and can be purchased at our warehouse location in Havre or one can be shipped directly to your home for an additional charge.

Third Party provided spare backup batteries.

You can also purchase additional spare backup batteries to keep on hand in your home through many of your local retailers such as Best Buy or on-line. Please contact Triangle and we will gladly provide you with the information you need to ensure that you purchase a quality battery model that meets the requirements for powering your network terminal.



Instructions for Proper Care and Use of Your Battery

Please follow the more detailed instructions included with your battery for proper use, storage and care of your battery to ensure that it will function as needed during a power outage. If you do not store your battery correctly, it may shorten its useful life. Environmental factors such as temperature can shorten your battery's useful life. We recommend that you store your battery above 41°F and below 104°F. These batteries are rechargeable. They will not last forever and should be replaced every two to three years, or when your device starts to make a loud beeping sound. That sound means that the battery is depleted and must be replaced. You should also periodically, as described in the instructions included with your battery, remove and test your battery to verify both the operation of the backup battery and its condition.

Please visit <http://www.itstriangle.com/battery> for the complete notice.

Please see the pictures to the left and below to determine which power supply box you have. This applies only to our members who are connected to the fiber optic cable.



WHO'S WHO AT YOUR TELCO?

Featuring Tiffany Kimberling, Customer Care Specialist

Tiffany Kimberling has been part of the Triangle Communications family for two years this March. She recently moved from her previous position in Reception and is currently training to be a Customer Care Specialist.



Tiffany knows a thing or two about customer service having been a daycare provider for 10 years and a teller at a local credit union before that. She is looking forward to her new position and enjoys helping customers and everything else that is part of her new job. She likes that every day there is something new and different and says that her coworkers are what she likes best about her job. Tiffany earned bonus points when asked what her dream job would be, she replied, "Working for Triangle, of course!"

In her spare time, when she is not chauffeuring her children and their friends to different school and

sporting events, Tiffany loves to paint. Watch out though as she said she loves to paint anything, including walls, furniture and canvas. Tiffany also loves to bake and cook. She would really like to vacation in Waco, TX and visit Magnolia Farms. She said if you watch the show, Fixer Upper, on the DIY Channel you will know why.

When Tiffany does finally take a break from her busy schedule, you can find her binge watching some of her favorite shows on Netflix. One thing you won't find her doing willingly is folding and matching socks which is her least favorite chore around the house. She said she has actually considered throwing a basket of socks away so she wouldn't have to match them. I think a lot of us can relate to that!

I would like to thank Tiffany for taking the time to answer all my questions. She is the first co-worker to answer every question I asked. I think her favorite quote describes Tiffany perfectly, "Stay humble, work hard and BE KIND!"

GO THE MONTANA WAY

From the mountains to the forests, from the prairies to our sheer landmass, Montana doesn't do anything small. And neither should you. Bigger Internet means faster speeds, which is better for you. Bigger Internet means not having to watch videos 30 seconds at a time because of buffering, not having to wait for files to download, not having to have your video chat or your game interrupted because you don't have the bandwidth to do what you need.

Bigger Internet means everybody in your family can use their computers, laptops, tablets and phones at the same time without worrying about losing their connections.

Triangle Communications is made for the Montana in you, and we're dedicated to our local communities. That's why we continue to improve our high-speed fiber network, so we can give you the biggest Internet even Montana can imagine. What could be better than that?

“ Right now, bigger Internet comes along with a fantastic offer: upgrade to our 12 Mbps service or higher starting April 1st, and you'll receive a \$100 prepaid Mastercard*. Faster Internet and a hundred bucks?! That's a big deal, and that's the Montana way.

Call us at 1.800.332.1201 or visit our office at 2121 US Hwy 2 NW in Havre.

*The Try a Faster speed for Free for Month offer ends 3/31/17. The \$100 prepaid Mastercard Promotion is valid 4/1/17 through 6/30/17.



CONGRATULATIONS FORT BENTON RECYCLES

"Montana Recycler of the Year"

Fort Benton Recycles, a volunteer grass roots organization, has been in operation since 2013.

They work with Steel Etc. from Great Falls which provides collection bins for recyclables including cardboard, paper, tin and aluminum. The bins are available for recycling at any time and the group offers recycling aid one Saturday a month. Congratulations Fort Benton Recycles!



FIND THE SPEED YOU NEED

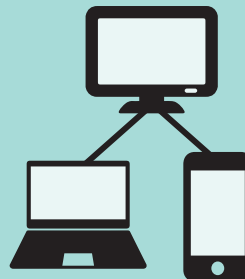
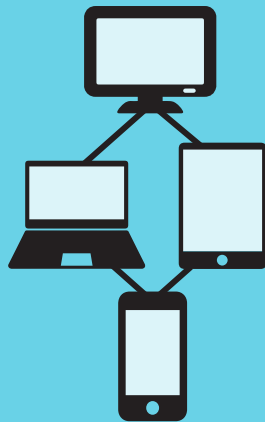
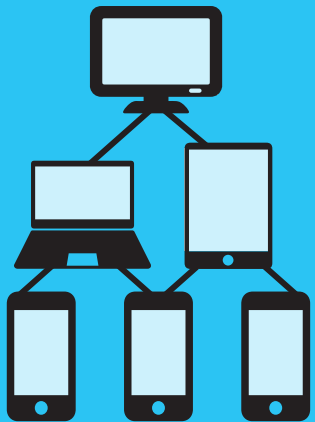
**50⁺
MBPS***

**24
MBPS***

**12
MBPS***

**6
MBPS***

**3
MBPS***



5+ Devices
Gaming | Multiple Streams

3-4 Devices
Streaming | Downloading

2-3 Devices
Light Streaming

1-2 Devices
Social, Email, Web Browsing

1 Device
Web Browsing & Email

* up to speeds. All speeds not available in all areas.

* up to speeds. All speeds not available in all areas.

* up to speeds. All speeds not available in all areas.

* up to speeds. All speeds not available in all areas.

* up to speeds. All speeds not available in all areas.

ULTRA PLAN

4+ Person Household
or Businesses

PRIME PLAN

3-4 Person Household

ESSENTIAL PLAN

2-3 Person Household

BASIC PLAN

1-2 Person Household

INTRO PLAN

1 Person Household

SWAP & SHOP

Free Classified Advertising for Our Customers and Communities

ANNOUNCEMENTS

AARP Smart Driver Course in Chinook

Chinook on March 7th from 12:30-4:30 pm at the Chinook Senior Center. Please call 406.357.2648 for more information or to register for the class.

AARP Smart Driver Course in Chester

Chester on March 14th at the Liberty County Senior Center from 12:30-4:30 pm. Call 406.759.5244 for more information and to sign up.

Big Timber Arts & Crafts Spring Fling

Vendors wanted for the Arts & Crafts Spring Fling in Big Timber on Saturday, April 29th from 9:00 am to 3:00 pm at the Big Timber Civic Center. For more information e-mail becky@voyafa.com or call 406.930.1880.

The 16th Annual Milk River Gospel Jamboree

June 23-25 at the Malta High School Auditorium. The event is free, please visit www.mrgjamboree.org for more information and to check out the groups performing.

IN SEARCH OF

Rotary Harrow

Looking to buy a rotary harrow. Phoenix, Phillips, or Rite-Way. Call Ted at 406.397.3248.

Wanted to Buy 410 or 28 Gauge Shotgun

Looking to buy a 410 or 28 gauge shotgun. Call 406.326.2287.

AGRICULTURE

Boom Truck Sprayer

2008 Summers 60 foot suspended boom truck sprayer. Includes windscreens, auto rate, hydraulic boom lift, 500 gallon tank and 5 HP Honda motor. Asking \$7,000. Call 406.397.3333.

1995 Concord Model 4012

40 foot with 12 inch spacing and air drill with model 3400 cart. New monitor and electrical with 5 inch carbide tips. Good condition. Call 406.397.3333.

King Farm Auger

2008 7-36, 18HP Honda engine, electric start, \$3500. Call 406.945.3666.

Case IH PS160

2012 Case IH PS 160 100 foot with suspended boom pull sprayer wind screens. Auto rate, auto boom and 1,600 gallon tank. Excellent condition. Call 406.397.3333.

John Deere Combine

1981 John Deere 7720 Combine with hydrostatic drive, straw chopper, feeder house reverser and 224 header. 3232 hours, good condition. Asking \$7,500. Call 406.397.3333.

Westfield Auger

7 X 41, 7 1/2 HP electric motor. \$1,000. Call 406.945.3666

AUTOMOTIVE

Chrysler Pacifica

Chrysler Pacifica, AWD, new tires, batteries and brakes. Asking \$4,000. Call 406.667.2302.

1993 Chevy Lumina

93 Chevy Lumina van for sale. Automatic, needs work. \$800 or best offer. Call 406.223.2861

MISCELLANEOUS FOR SALE

Palomino Slide In Camper

2002, 8-foot Palomino slide in camper. Asking \$7,500. Call 406.667.2302.

Antique Power Hacksaw

Iron Mike 8 1/2" power hacksaw. \$50, as is. Call 406.321.4008. (See photo at www.itstriangle.com)

Industrial Sewing Machines

Brother industrial sewing machine in a large table, model #DBL5506. \$2200. Juke Industrial sewing machine in table model #DDL5506. \$900. For more information and pictures, call 406.547.3759, evenings are best.

Records

Records from the Big Band era to the 1970s. Some Victor records also. \$100 for 110 records. Call 406.932.4583.

Swap & Shop is a classified advertising section of the Triangle Communications and Hill County Electric websites and newsletters. It is maintained as a service to customers and communities wanting to buy, sell and announce non-commercial items. To have an ad included, simply enter all the pertinent information on the online form. An administrator will review the information within two business days and if approved, the ad will then appear. It will stay online for 60 days unless you notify us to remove or change it. It will also appear in any of the newsletters printed during that 60 day window. Triangle reserves the right to abbreviate ads and if the section is full, we will display ads on a first come, first-served basis. If you're unable to enter your ad online you may mail or e-mail it in using the contact info inside the front cover of this magazine. Happy swapping and shopping!

Furniture

Couch, love seat and rocking chair for sale. \$150 each or \$400 for all three. Call 406.667.2302.

Delta 10" Table Saw

Delta 10" table saw in good condition includes Biesmeyer fence. Mobile base. \$1500. Located 10 miles north of White Sulphur Springs. Call Jim at 406.547.6399 or email berggie@hotmail.com.

8 1/4" Compound Miter Saw

Master Mechanic 8 1/4" electric compound miter saw, excellent condition. \$60, call 406.321.4008. (See photo at www.itstriangle.com)

Compound Miter Saw

Craftsman hand operated compound miter saw like new, \$30. Call 406.321.4008. (See photo at www.itstriangle.com)

Spray Tech Airless Sprayer

Spray Tech Apex Series 3/8 hp airless piston pump paint sprayer. Asking \$100. Call 406.321.4008. (See photo at www.itstriangle.com)

Saxophone, Golf Clubs and more

Barely used Jupiter JAX-767 Saxophone with case, etc. - \$750. Older, good condition golf clubs (10 irons, 4 woods), nice newish bag, cart, 6'1" owner - \$150. Hex dumbbells (1 pr each of 3, 5, 10, 15 lb) and brand new York 69001 stand - \$75. Super Star Antique Waffle Iron, electric - \$5. (See photo at www.itstriangle.com)

Miscellaneous

1965 PONTIAC Tri-power, all original and complete, w/linkage, air cleaners. Very rare, \$1950. REESE Pro model 1200, 5th wheel removeable 15,000 lb hitch, \$495. 1950s embossed 7up electric cooler, all complete and original, \$650. CRAFTSMAN pressure washer w/soap system, 2700 PSI-2.3 gal per minute Has Honda motor. Used once, \$275. Cast iron speeder sign, \$275. 5"X37" PONTIAC - 4 Aluminum wheels nice shape, \$200. PONTIAC Trans Am aluminum snowflake wheels, \$200. Call 406.374.2458.

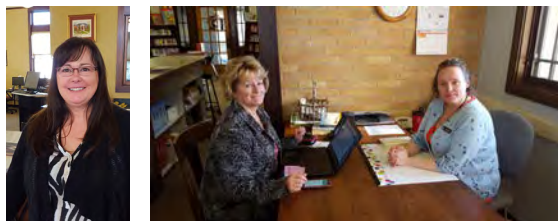
RURAL LIBRARY SHOWCASE

by Anne Boothe - Economic Development Specialist

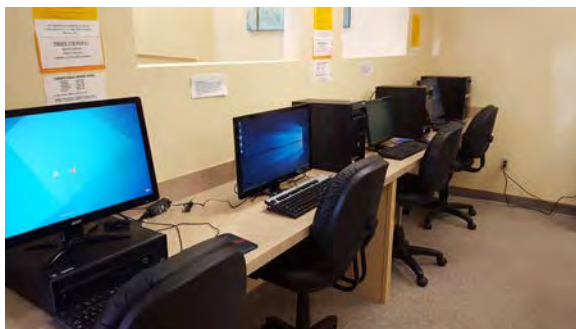
Rural libraries enhanced by high speed Internet often experience a resurgence of community interest and participation. A national study of those who visit libraries and connect to the Internet, either by a public use computer or their own laptop or device, report the following reasons for internet use:

66% did research for school or work, 63% browsed the internet for fun or to pass the time, 54% used email, 47% obtained health information, 41% visited a government website or looked up information about government services, 36% looked for or applied for jobs online, 35% visited social networking sites, 26% downloaded or watched online video, 16% bought a product online, paid bills or other online banking and took an online class or completed an online certification program.

Triangle Communications (Triangle) appreciates the libraries throughout our service area and I am pleased to showcase them in this month's magazine.



I made a fun stop by the Hobson Library and found youth and adults enjoying the resources of the public library. From the exterior of the Hobson library, to the public use computer stations and a special reading castle, Librarian Jeni Hammontree and the Hobson community has created a very welcoming environment for all ages. (www.hobsonlibrary.org)



The Harlem Public Library is conveniently located in downtown Harlem. With the help of their Friends of Library group and a Community Vitality Grant from Triangle, recent renovations have provided additional space for public computers. (www.harlempubliclibrary.org)

Photos to the left, from top left: Jacquie Scott, Director, Big Timber Library. Debbie Wellman, Director and Sandra Larson, Assistant Librarian and IT Tech, Chouteau Library. Colleen Brommer, Director and Carly Vathier, Assistant Librarian, Harlem Library. Jeni Hammontree, Librarian, Hobson Library.



Chouteau County Library in Fort Benton is known as the oldest county library in Montana. On the inside, this historic Carnegie Library offers all the amenities of modern libraries including multiple computer stations and helpful staff and volunteers. (www.chouteaucountylibrary.com)



The Big Timber Carnegie Public Library has served Big Timber and Sweet Grass County residents for over 100 years. Library Director, Jacquie Scott, shared her favorite thank you note with me from a library patron who wrote "I got my job online at the Carnegie Public Library!" In addition to the public use computer area and a cozy kid's corner, the library also offers a technology equipped public conference room. (www.bigtimberlibrary.org)

Look for a library near you in coming issues of Triangle's Keeping You Connected Magazine.

DIRECTORY CHANGES

NorthWestern Energy 888-467-2669

Emergency Service- 24 hours/365 days per year
Customer Service
7:00 am – 6:00 pm Monday-Friday
9:00 am – 5:00pm Saturday & Sunday
Billing and credit info and disconnects
Service repairs, gas odor reports,
power outages and to report low hanging lines
Underground Line Locating 800-424-5555

BIG SANDY

Bessette Lynda 406-378-2448
Brianna Bernhardt 406-378-2431
Carroll Carl 406-378-2473
Darrah Thaddeus 406-378-2621
Edwards Randy 406-378-3219
Jappe Lawrence 406-378-2380
Marino Paul & Kandi 406-378-2484
Phillips Lola (June) 406-378-2593
Terry Amy 406-378-3242

BIG TIMBER

Baldwin James 406-932-4335
Bratvold James & Cheryll 406-932-5684
Ellison Jim 406-932-6176
Higgins K 406-932-3098
Bunkhouse 406-932-5232
Jackson Richard 406-932-5026
Johnson Brandi 406-932-4991
Johnson Jeff 406-932-5749
Metcalf Remi & Susan 406-932-5096
Pena Salvador 406-932-5812
Phillips Ivy 406-932-6155
Renskers Shannon 406-932-4020
Stockwell Ashley & Kaleb 406-932-5882
Sweetgrass Associates 406-932-5075
Voya Financial Advisors 406-932-4467
Webber Cynthia 406-932-5174
Wood Brandon 406-932-6363

BOX ELDER

A Cut Above Tree Care 406-352-3342
Azure Brenda 406-352-3087
Big Bow Mary E 406-352-3101
Duran Angela 406-352-3229
Sherer Roger 406-352-4725
Small Nadine 406-352-3102
St Pierre Greg 406-352-3430

CHESTER

Bronk Timothy 406-759-5176
Han Kenneth M 406-759-5845
McCormack E 406-759-5167
Meyers Matt & Andria 406-759-5992
Peet Debbie 406-759-5912
Ramberg Dental Inc 406-759-5350

CHINOOK

Baublitz Rick & Missy 406-357-2327
Bell Laurenda 406-357-2681
Finch Frank 406-357-4154
Finley Sarah 406-357-2801
Haldemann John C & Betty 406-357-3764
Hanks Jes 406-357-4152

Jeff & Christie Nissen 406-357-2643
Kunhenn Nichole 406-357-3357
Lawrence Selena 406-357-2910
Skoyen Justin & Jordyn Baird 406-357-3879
Spudic Kevin 406-357-3580
Thompson David 406-357-2957
Treasure State Title 406-357-3509
White Cow E 406-357-3193

DENTON

Barber Larry 406-567-2389
Jelinek Terri 406-567-3115
Linker David - Shop 406-567-2646
Lye Angela 406-567-3130
Saisbury Dustin & Jolie 406-567-3155

DODSON

Leo Samantha 406-383-4475

FORT BENTON

Garcia Jordan 406-622-5357
Holder Mary 406-622-5202
Sather Tony 406-622-3267

GERALDINE

Cantrell James 406-737-4307
Clousing Calvin 406-737-4554
Norton Deborah 406-737-4540
White Kathleen 406-737-4391

GILDFORD

Erickson Trevor 406-376-3285

HARLEM

Alexander Monica J 406-353-4593
Bigby Deanna 406-353-2758
Black Lance Amber 406-353-2649
Black Wolf D & N 406-353-2790
Brockie Hank 406-353-4291
Calvert Dick 406-353-4222
Cochran D 406-353-4845
Contway John 406-353-4342
Essert Shelby 406-353-4695
Fetter Chad 406-353-4331
Fox Jamie 406-353-2565
Gone Sarah 406-353-4148
Gruszie Janet E 406-353-2680
Hockhalter Eugene 406-353-2242
Horn Donald 406-353-4878
Leo James 406-353-2456
Meghuels Light Auto Care 406-353-4461
Moore Ethel 406-353-2431
Orlando Lilah 406-353-2569
Risingsun Randy 406-353-2967
Sears Lacey 406-353-4431
Stuker Lana 406-353-2951
Uzoho Ijeoma 406-353-2493
Walker Robin 406-353-2750
Yellow Angelina 406-353-4765

HARLOWTON

Burcham Tabatha 406-632-4176
Burkhardt Chris 406-632-4684
Clements James & Amber 406-632-4171
Farnsley Floyd Sr & Stacie 406-632-5518
Moore R 406-632-5646

Olmstead David 406-632-4401
Peters Inc 406-632-5521
Fax Line 406-632-4698
Phythian Kimberly 406-632-5811
Tierney J & R 406-632-4291
Travis Geoffery 406-632-5746

HAVRE - SOUTH

Baird Charles 406-395-5260
Baker P 406-395-5106
Berreth Brandon 406-395-4061
Harwood Sheldon 406-395-5006
Johnson Jessica 406-395-4264
Johnson Ryan & Kim 406-395-4105
Lamere Dyan 406-395-4885
Oats Corcoran Josephine 406-395-4838
Parker Raymond Jr 406-395-4339
Soloman Clint & Casey 406-395-8305
Stanley Steven 406-395-5087
Stump Marlo 406-395-4024
Sutherland Phillip 406-395-4028
Windy Boy Veronica 406-395-8304
Wolfchild Chad 406-395-4060

HAYS

Bradley S & J 406-673-3136
Cliff Lynette 406-673-3920
Doney Irene 406-673-3211
Flying Alyssa 406-673-3740
Gray Michael 406-673-3454
Messerly Dean & Ramona 406-673-3901
Werk Bryce 406-673-3787

HINGHAM

Moore Jhamiel & Keeley 406-397-3338
Sheldon Shelley A 406-397-3129

HOBSON

Jedlicka Jeff 406-423-2020
Jerome Barbara 406-423-5210
Myers Toney 406-423-5261

HOPP-ILIAD

Wortman Lucy & Sheena 406-386-2296

LOMA

Handford Dan & Mary 406-739-4311
Roddy Marcus 406-739-4424
Roudebush Justin 406-739-4291
Sande Derek 406-739-4355
Sayers Sean 406-739-4489

MALTA

Active Solutions Physical
Therapy 406-654-5231
Demarais Darren & Shelley 406-654-2478
Foss Mark 406-654-2941
Gaines Catherine 406-654-5524
Gilmore Alyson 406-654-2218
Henderson Philip 406-654-1714
Lulloff Ty 406-654-1255
Luloff William 406-654-1990
Schumacher F 406-654-1981
Warren Paul & Kayla 406-654-1445

MALTA-SOUTH

Merriman Anna 406-658-2143

MARTINSDALE

Angel Amy 406-572-3449
Crazy M Ranch 406-572-3462
Voldseth Vance 406-572-3640
Bunkhouse 406-572-3386
Shop 406-572-3339
Yellow Pony Morning Sun 406-572-3620

MOLT

Bowen Chaney 406-669-3365
Burke John 406-669-3133
Downs Justin & Angie 406-669-3108
Gilbertson Mark 406-669-3833
Mitzel Jaymie 406-669-3120
Pottenger Steven & Kelly 406-669-3319

MOORE

Kellom Andy 406-374-2797
Melichar A 406-374-2319
Nebeker Mark 406-374-5684
Walton Sam & Julie 406-374-2497
Wollman Mark 406-374-6833
Young Alan & Teresa 406-374-2419

RAPELJE

Curry Chad & Erin 406-663-2157

RUDYARD

Knutson Shaun & Brandy 406-355-4194
Nesbitt Brett 406-355-4451

SIMPSON

Hofman Jeremy - Shop 406-394-2300

STANFORD

Jones Donald 406-566-2400
Mountain Avenue Bees Inc 406-566-2673
Smith Alyssa 406-566-2534

TURNER

Cowan Keith 406-379-0308
Cowan Keith - Shop 406-379-2352
Hawley Bryan & Angela 406-379-2576

WHITE SULPHUR SPRINGS

Borup Kelsy 406-547-3742
Brewer Cody 406-547-3528
Burlison Levi 406-547-3837
First American Title 406-547-3355
Lind Jake & Carletta 406-547-2564
Manger Nancy 406-547-3773
Martin Hal 406-547-3226
McDanel Keith & Erika 406-547-3601
Mountain View Coop/
Energy Division 406-547-6666
Fax 406-547-3525
Tender Foot Cabins & Motel Inc 406-547-3303

WHITEWATER

Keeney Brian 406-674-5259

WINIFRED

Butler David & Susan 406-462-5398
Butler David & Susan - Shop 406-462-5549
Econom Nicholas 406-462-5544
Knox Sarah 406-462-5321
L A Construction 406-462-5685
Meeks Kraig 406-462-5697

STATEMENT OF NON-DISCRIMINATION

Triangle Communications is the recipient of Federal financial assistance from the United States Department of Agriculture (USDA). The U.S. Department of Agriculture (USDA) prohibits discrimination against its customers, employees, and applicants for employment on the bases of race, color, national origin, age, disability, sex, gender identity, religion, reprisal, and where applicable, political beliefs, marital status, familial or parental status, sexual orientation, or all or part of an individual's income is derived from any public assistance program, or protected genetic information in employment or in any program or activity conducted or funded by the Department. (Not all prohibited bases will apply to all programs and/or employment activities.)

Individuals who are deaf, hard of hearing or have speech disabilities wishing to file either an EEO or program complaint please contact USDA through the Federal Relay Service at (800) 877-8339 or (800) 845-6136 (in Spanish).

Persons with disabilities wishing to file a program complaint, please see information below on how to contact us by mail directly or by email. If you require alternative means of communication for program information (e.g., Braille, large print, audiotope, etc.) please contact USDA's TARGET Center at (202) 720-2600 (voice and TDD).

Triangle Communications is an equal opportunity providers and employers.

If you wish to file a Civil Rights program complaint of discrimination, complete the USDA Program Discrimination Complaint Form, found online at http://www.ascr.usda.gov/complaint_filing_cust.html, or at any USDA office, or call (866) 632-9992 to request the form. You may also write a letter containing all of the information requested in the form. Send your completed complaint form or letter to us by mail at U.S. Department of Agriculture, Director, Office of Adjudication, 1400 Independence Avenue, S.W., Washington, D.C. 20250-9410, by fax (202)690-7442 or e-mail at program.intake@usda.gov.

MYSTERY PHOTO AND TELCO QUIZ

Two Lucky Subscribers Per Issue Will Win \$25!

We received 121 entries that correctly identified our last issue's mystery photo as the part of the Haymaker Bakery logo Growing From Within article on White Sulphur Springs and also correctly answered that one of the eligible programs for Lifeline are Supplemental Nutrition Assistance Program, Supplemental Security Income, Medicaid, Federal Public Housing Assistance or Veterans Pension and Survivor Benefits. A special congratulations to Lori Kinsey and Marcia Overcast who were drawn randomly to receive a \$25 credit on their Triangle bill.



Try your luck with this issue's quiz and mystery photo shown on the right.

Two Chances to Win!

#1. What Internet speed is best for homes with 3 - 4 devices?

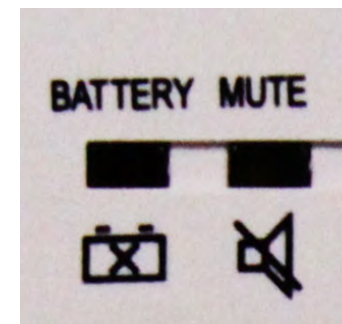
#2. Mystery Photo (right):

My name is:

My Triangle phone number is: _____

Yes! I want to receive e-mail notifications about special events or deals in my area. My e-mail address is: _____

Entries must be received by April 10, 2017 to be eligible for the drawing. Please return this slip with your payment or mail to: Newsletter, Triangle Communications, PO Box 1140, Havre MT 59501. You can also submit your answers at www.itstriangle.com/telco-quiz.





PO BOX 1140
2121 US HWY 2 NW
HAVRE, MT 59501-1140

PRSR STD
U.S. POSTAGE
PAID
KALISPELL, MT
Permit No. 27

MONTANA-SIZED INTERNET



**Alicia Said Goodbye
to Slow Internet!**

Alicia Moe, GM - Cream of the West in Harlowton, MT

1.800.332.1201 | itstriangle.com  

